

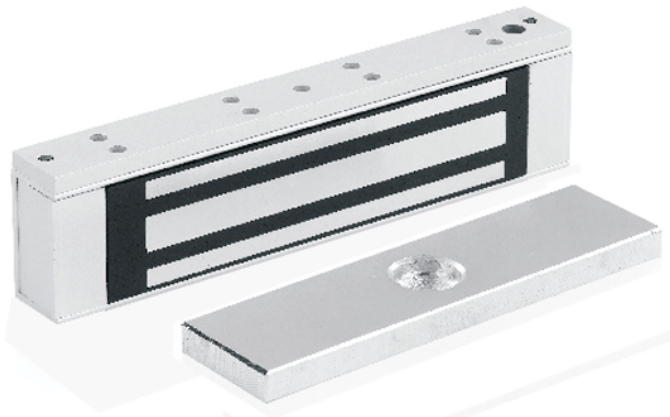


*Professional Design & Super Suction  
Superior Quality and Reliable Performance*

## **MEC-350, MEC-350M**

**350Lbs(180KG)**

*Single Door Magnetic Lock*



### **PRODUCT OVERVIEW**

The design of magnetic locks (Electromagnetic lock) is the same as the electromagnet. By using the principle of electromagnetic, when current passes through the silicon steel sheet, magnetic locks will produce powerful suction, thereby help to tightly absorb iron plate. Even small current will produce huge magnetic force, which can effectively control the door.

MEC magnetic locks adopt international leading production equipment and packaging technology, which not only makes our locks' antioxidant capacity of the surface reach the international leading level, but also helps to increase the holding force (higher 20% than other manufacturers). Now our locks have been sold to more than 60 countries and regions around the world, they are widely used in the important places such as airports, subways, banks, prisons, intelligent buildings, intelligent community and so on, and become convenient, fast and intelligent tool for global users, gain good reputation from the customers.

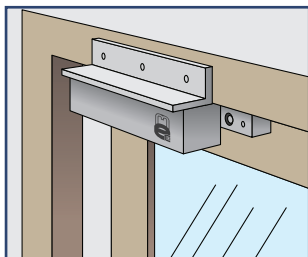
### **ADVANTAGE OF THE PRODUCTS**

- Powerful static linear holding force.
- Dual Voltage 12 or 24 VDC(optional).
- Built-in reverse current protection device (MOV).
- Anti residual magnetism design, anti-wear manufacturing materials.
- Shell is made of high-strength aluminum alloy, Anodized.
- Increase the holding Force, Dual Insulative Hosing.
- MA certified products of China / CE certification of EU.
- Complete electromagnetic suction working no mechanical failure.

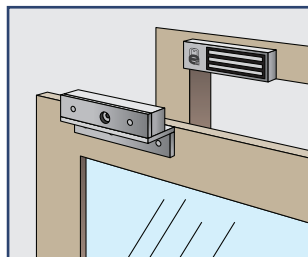
### **SPECIFICATION**

Model	:	MEC-350	MEC-350M
Lock Size	:	170L*42W*21H(mm)	
Armature Plate Dimension	:	130L*33W*9H(mm)	
Holding Force	:	350Lbs(180kg)	
Door Signal	:	No	No
Lock Signal	:	No	Yes
Input Voltage	:	DC12V or DC24V	
Working Current	:	12V/300mA or 24V/150mA	
Door Type Applicable	:	Wooden / Glass / Metal / Fireproof door	
Security Type	:	Power off to open	
Weight	:	1.2KG	1.2KG

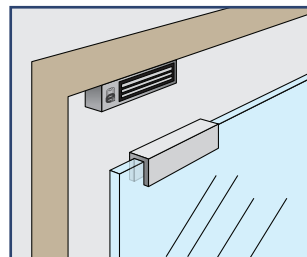
### **INSTALLATION DRAWING**



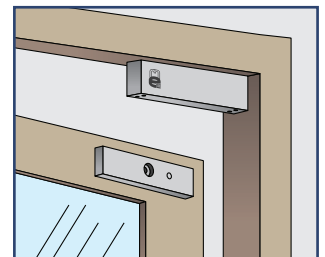
L Bracket



ZL Bracket



U Bracket



Effect of Installation groove for Armature plate